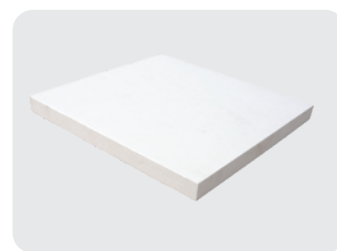


## Introduction

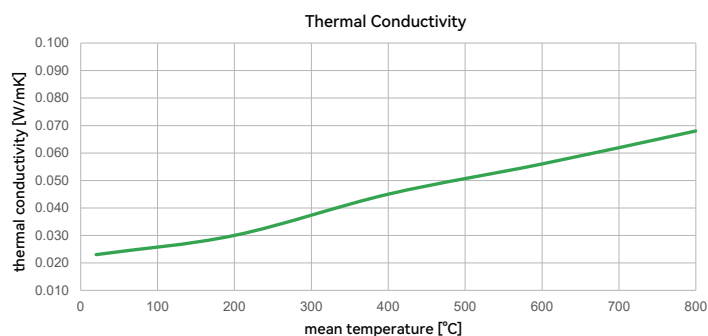
TT 1050Z classic is a board shape insulation material. TT 1050Z classic offers excellent lambda values and strength at lowest weight and shrinkage values. The homogeneous distribution of the ingredients is the market benchmark and provides an equal temperature distribution over the whole surface area.



## Technical Data

### Thermal Conductivity

20 °C / 68 °F	0.023 W/m K
200 °C / 392 °F	0.030 W/m K
400 °C / 752 °F	0.045 W/m K
600 °C / 1112 °F	0.056 W/m K
800 °C / 1472 °F	0.068 W/m K



### Other Technical Parameters

classification temperature	1050 °C / 1922 °F
continuous application temperature	1000°C / 1832 °F
shrinkage: at 1050 °C / 1922 °F one side 12 h <sup>1</sup>	< 0.5 %
shrinkage: at 1000 °C / 1832 °F all sides 12 h	< 2.0 %
nominal density <sup>2</sup>	280 kg/m <sup>3</sup>
compressive strength at 10% deformation	≥ 0.27 MPa
microporous core colour	white

## Chemical Composition

SiO <sub>2</sub>	55-75 %
ZrSiO <sub>4</sub>	20-40 %
Others	1-5 %

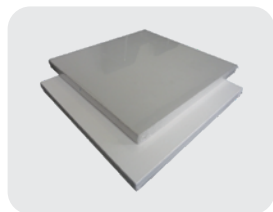
## Available Sizes

dimensions	1000 x 600 mm, 1000 x 1000 mm, 1320 x 1000 mm, more sizes on request
thickness	5-50 mm, more size on request
tolerances	length and width: ± 2 mm; thickness (T): T ≤ 30 mm, ± 1 mm; T > 30 mm, ± 1.5 mm

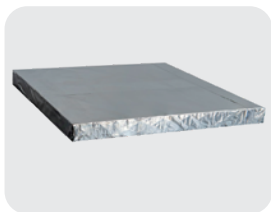
1. measured at 25 mm thickness insulated towards room temperature. The shrinkage value refers to the surface on the hot side. This value represents common usage conditions of an insulation material.

2. 25 mm thickness board, tolerance ± 5 %.

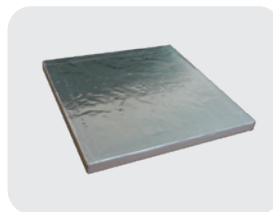
## Surface Covering Options



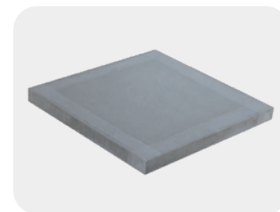
POF wrapped



Aluminium foil wrapped



Aluminium foil laminated



Glass tissue laminated

The boards can be naked, wrapped or laminated with different coverings depending on your application. More coverings are available on request.

## Other Customized Services

### Cutting and Machinery Service

We provide inhouse cutting and machinery service for your customized shapes or dimensions. Our boards can be cut, shaped, sawn, drilled and punched with conventional woodworking hand tools and automatic machinery and fixed with other insulators using glue, retaining pins and anchors.

### Net Shape Pressing

We provide customized molds for larger quantities to improve cut-off losses.

## Technical Limitation

Water and other liquids will irreversibly destroy the microporous structure and as a result the insulation performance of the material.

## Declaration of Non-hazardousness

According to the regulation of the European union 2006/1907/EC this material is classified as non-hazardous. The used fibers are not respirable as defined by WHO.



unicorn-insulations.com  
info@unicorn-insulations.com

ISO9001:2015  
CERTIFIED



**Disclaimer:** The information contained in this brochure and datasheets is intended to assist with the usage of unicorn insulations products. It is not intended to and does not create any warranties, express or implied, including any warranty of merchantability or fitness for a particular purpose or that the result shown in this brochure will be achieved by a user for a particular purpose. The user is responsible for determining the suitability of unicorn insulations products for each application. The user is obliged to check the intended usage of the material in terms of infringement on any intellectual property of a third party.